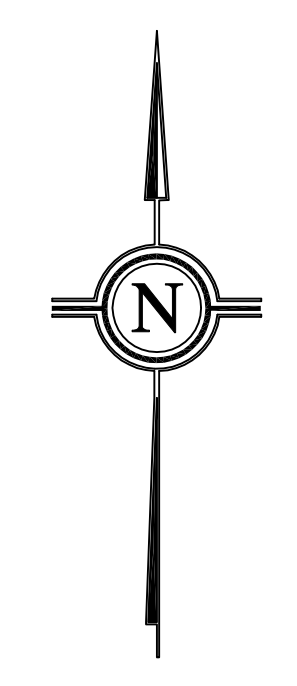
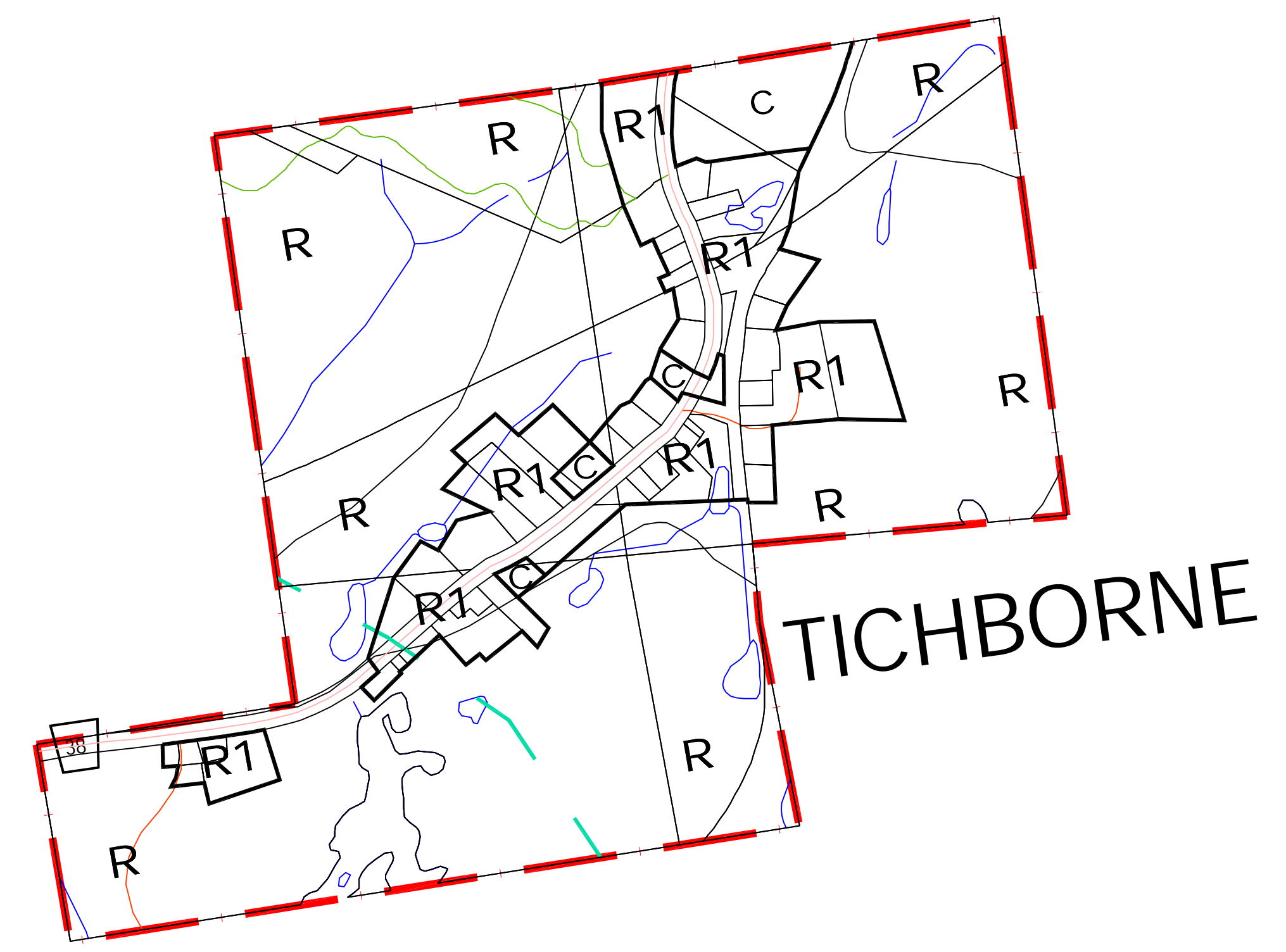
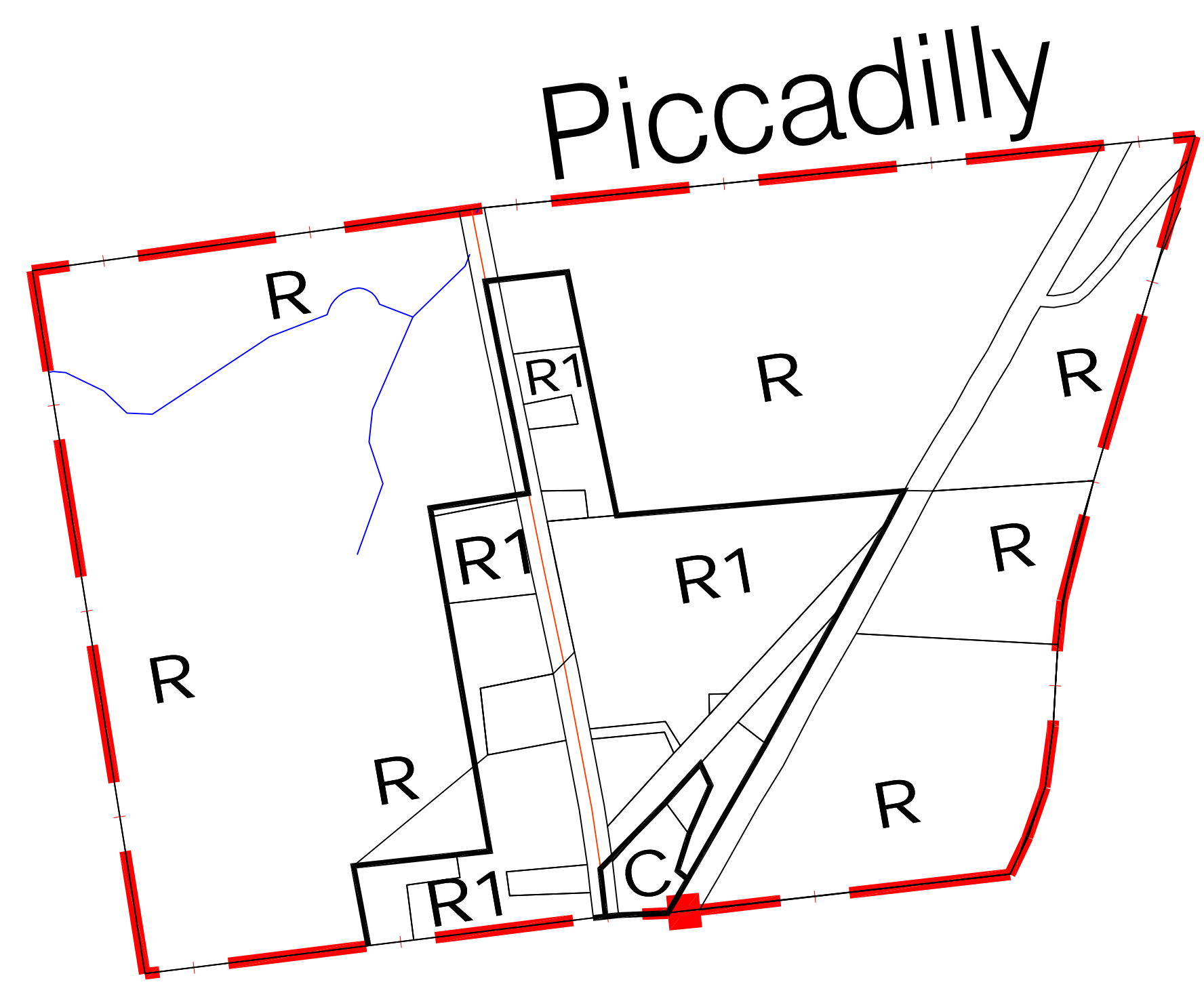
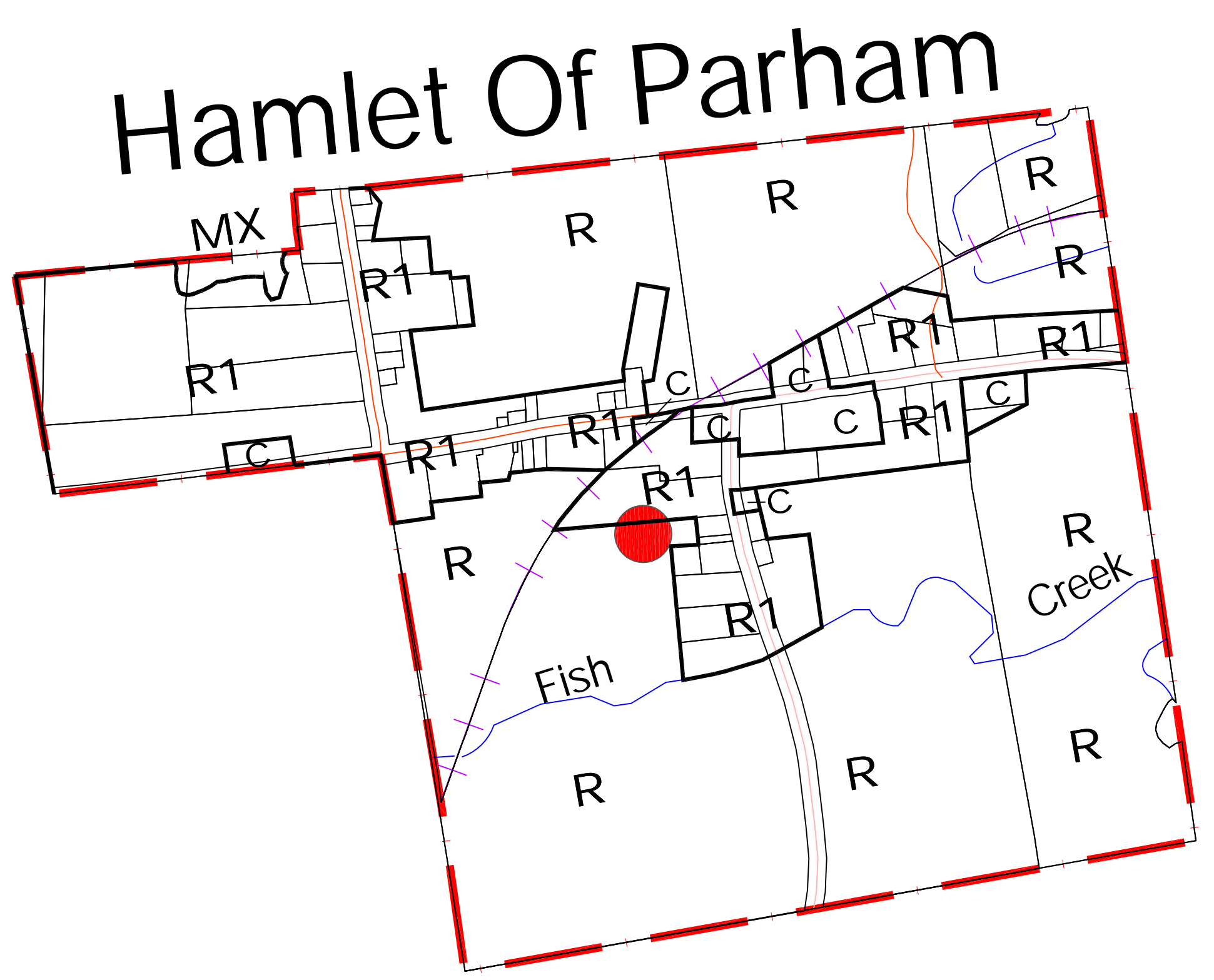
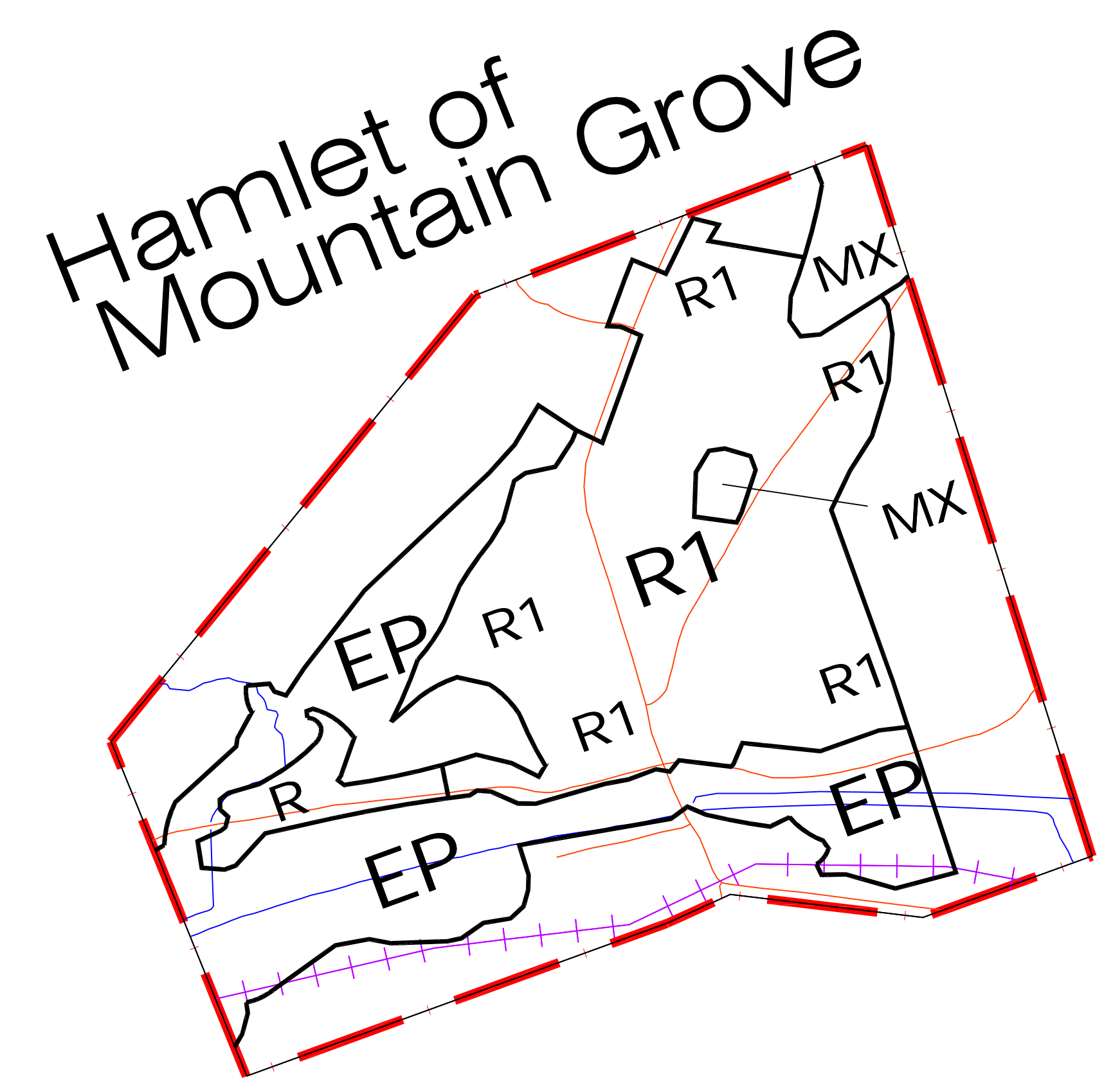
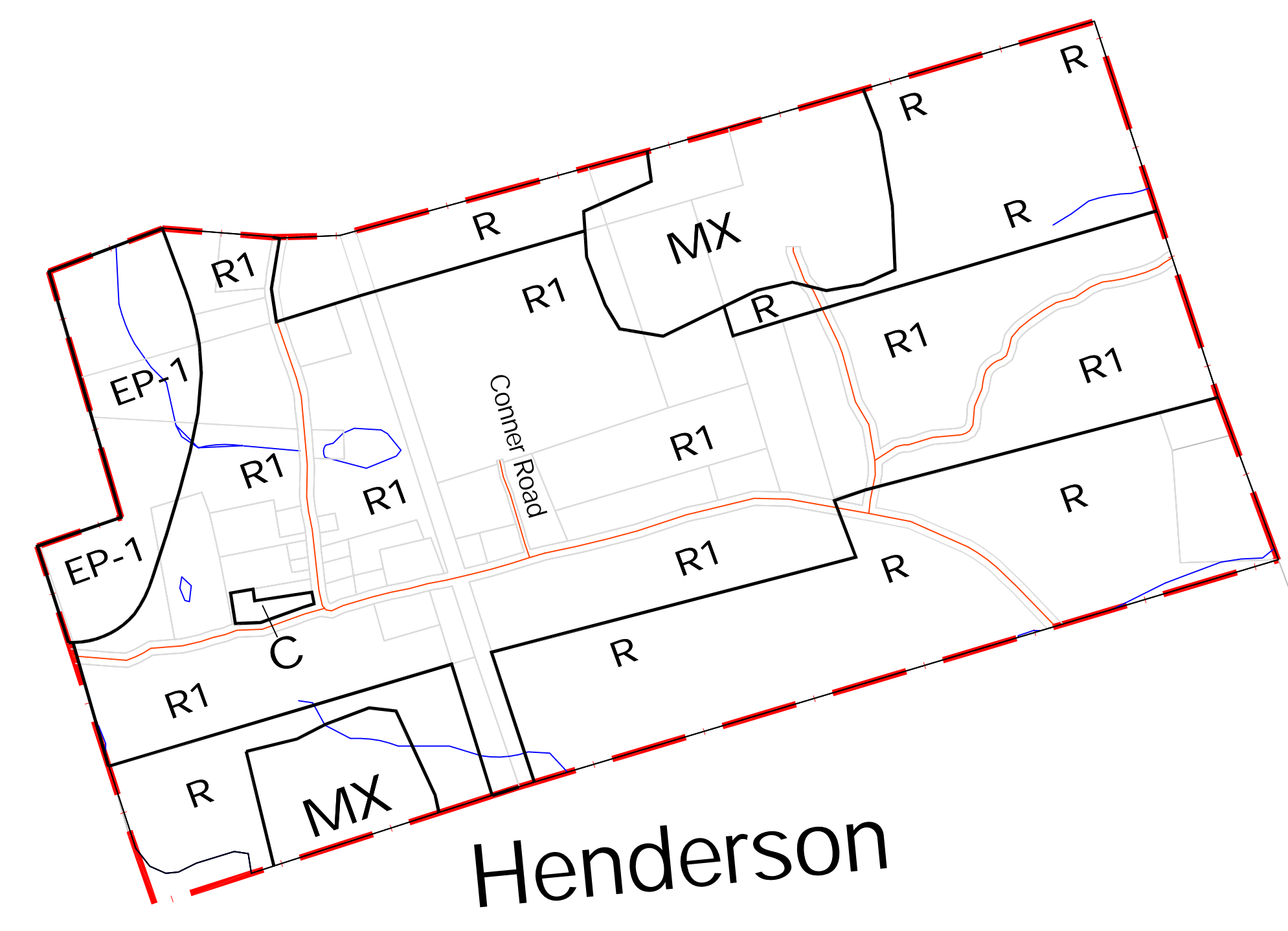
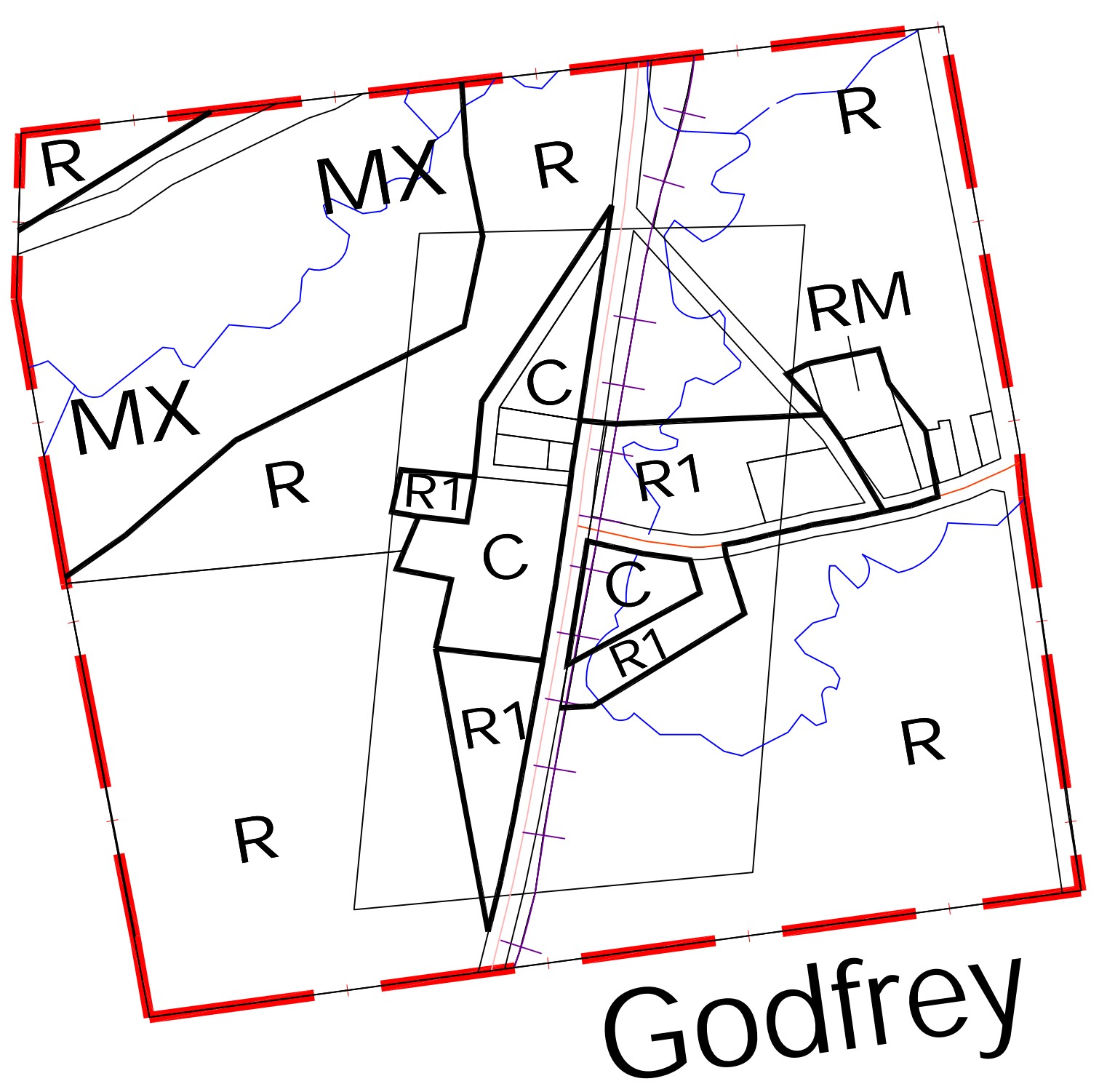
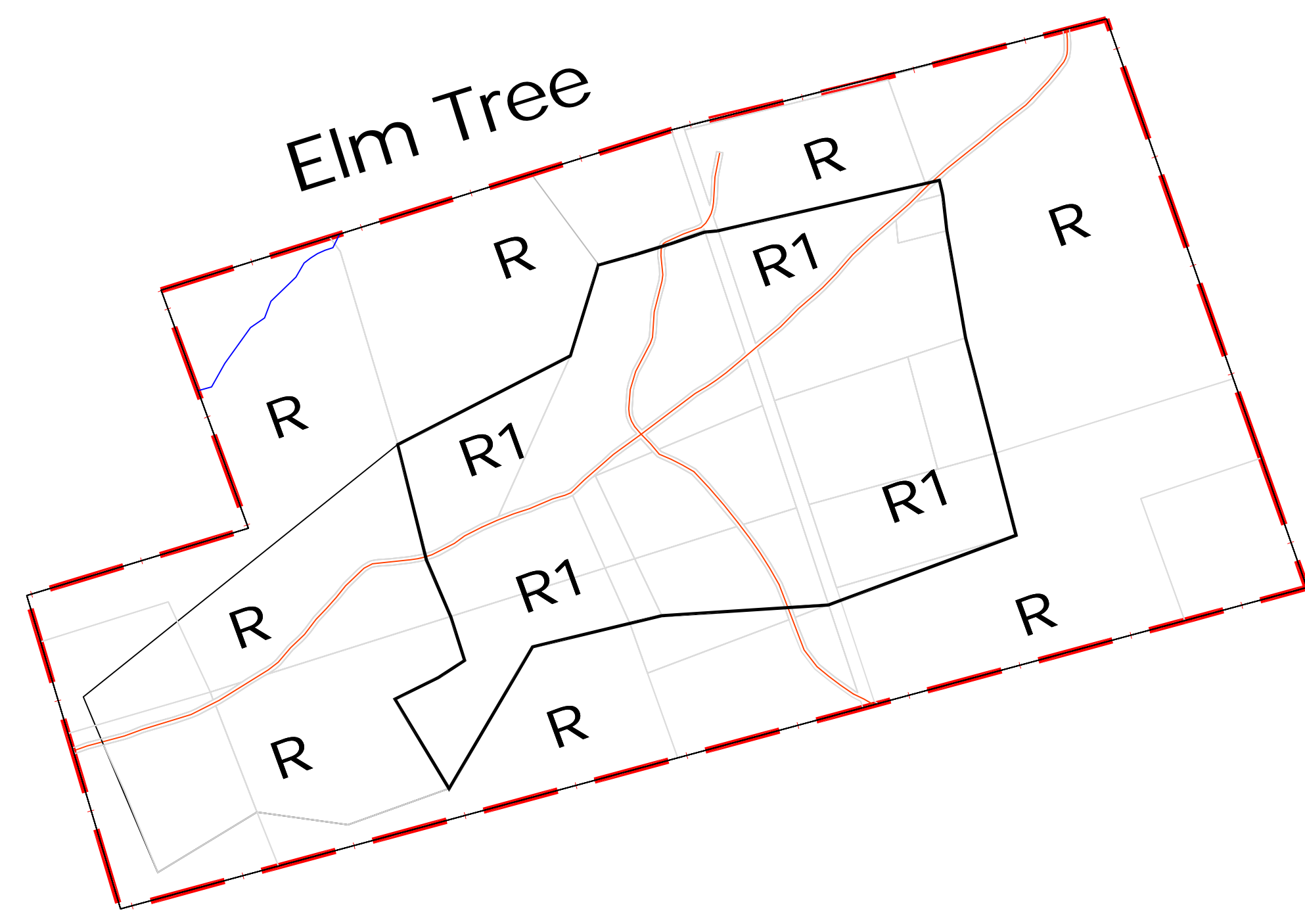
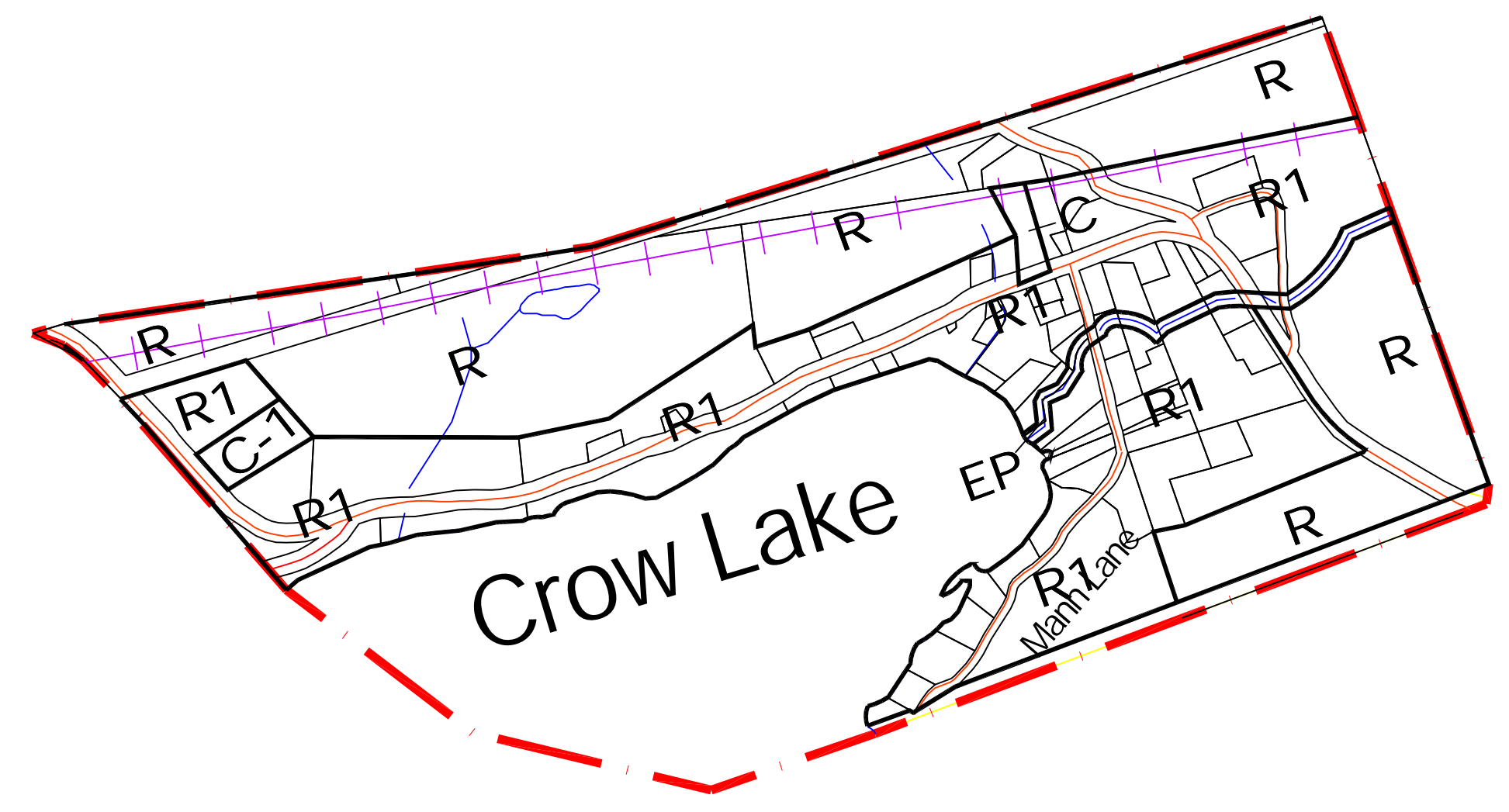
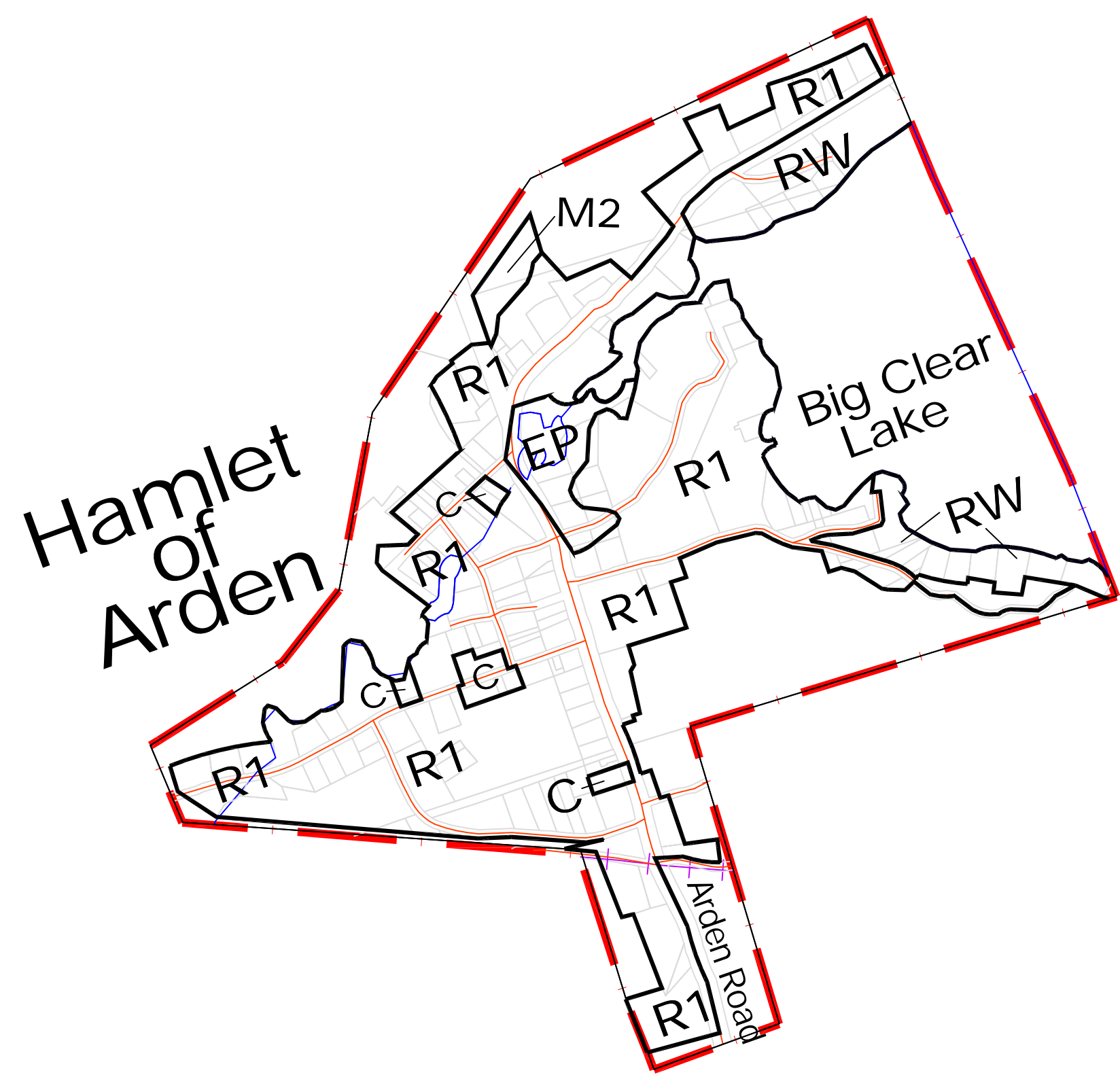


ZONING BY-LAW FOR THE
 TOWNSHIP OF
CENTRAL FRONTENAC
 Crow Lake, Godfrey, Tichborne, Parham, Piccadilly,
 Mountain Grove, Arden, Henderson, Elmtree
 Schedule 'A6'
 TO BY-LAW NO. 2002 120

ZONES

Residential Zones	
General Residential	R1
Multiple Residential	RM
Waterfront Residential	RW
Commercial Zones	
General Commercial	C
Recreational Commercial	CR
Local Commercial	CL
Industrial Zones	
Light Industrial	M1
Medium Industrial	M2
Rural Industrial	M3
Mineral Aggregate Resource	MX
Waste Management Facility	WMF
-Licensed Area	
-500 m Influence Area	
Rural And Environmental Zones	
Rural	R
Limited Service	LSR
Environmental Protection	EP
-Organic Soils	EP-1
Transportation and Infrastructure	
Provincial Highway	
Township Roads	
Arterial Road	
Year Round Maintained	
Seasonally Maintained	
Heritage Road	
Unmaintained Road	
Private Road	
Resource Access Road	
Road Allowance	
Other:	
Rail Line	
Abandoned Rail Line	
Power Transmission Line	
Other Features	
Contaminated Sites	
Mine Hazards	
Crown Land	
Township Boundary	
Provincial Park	



Note: The base information on this plan was prepared from a variety of map sources and was used by permission of Township of Central Frontenac. It is not a legal plan of survey. For precise location of plan features recourse should be had to the original source data.